

Equine-Assisted Therapy News

From The Director's Desk ...



I know you must be thinking after the over-the-top Trivia Night in March, the Hop-In-to-Spring Egg Hunt in April, the Summers Treasures Sale in June followed by the Car Wash in August and topped off with the 5th Annual Golf Tournament in September, surely Equine-Assisted Therapy is ready to take a long winters nap!



Well, hold on there cowboy cuz we're not done yet! Every Fall EAT partners with the City of Town and Country to hold their annual Community Days Event at Longview Farm Park. It's always a beautiful, crisp Fall day filled with booths, exhibits, crafts, food and PONY RIDES! Please come out and join this day of family fun **October 17th - 9:00 - noon.**

Wherever I go, whatever I'm doing, I am bragging on the volunteers at Equine-Assisted Therapy! I was even in the hospital lately and picked up a few extra volunteers from the ER, lab, the cardiac cath lab, the nursing staff, the kitchen staff and the little transporter guy, with my stories! :-)



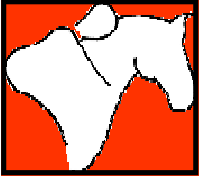
Every last one of you has touched a life in ways you may never know and EAT wants to thank you for being the wonderful person you are! Our last session of '09 ends the week of Oct 19 - 24 and we will have gifts for you all as you leave your last lesson for the year. Or, if you can't come that last week, let us know and we'll deliver! We love you all and you deserve so much more than we can give.

♥ Ginni

Thanks to a special group of volunteers that came out to repair our Town & Country Arena! Karen Ernst headed up this small army of hard workers to strengthen and beautify our arena that Tomeo has put to the ultimate stress test! George Andrews, Danielle and Elizabeth Brantley, Margaret Craig, Matt Eckelkamp and Michelle Ennenbach are the ones to thank for this much needed improvement!



We Love Our Volunteers !!!



Equine-Assisted Therapy News



Participant Spotlight ... Hannah Benson



Meet Hannah Benson, one of our EAT participants. We asked Hannah about some of her favorite things:

Hannah's favorite EAT horse is Bubby, the horse she currently rides, but she will never forget her first --- Foxy!

Her favorite thing to do at Equine-Assisted Therapy is "I LIKE TO TROT!" and playing

games like horse shoe ring toss.

Hannah's favorite thing away from EAT is dancing, reading and playing with her friends.

Her favorite foods: Spaghetti, kiwi fruit, & of course Chocolate . . . Least favorite food: mashed potatoes L

Hannah's parents, Jane & Dave had this to say about their experience with the Equine-Assisted Therapy program. "I honestly can't remember where we learned about EAT, we had been asking around a lot because several people had told us about horse therapy programs and how good it is for kids who need help with strength and speech. Hannah has been participating in EAT since before she turned 4 years old! --- she will be 8 on Sept 28!

I have to say that from the very beginning we saw strides in her development --- stronger posture, better speech, boost in self-confidence, but what we love the most is the joy it gives to Hannah. "

EAT Car Wash

Saturday August 22nd was a beautiful day for a Car Wash and thanks to Kelly Baker, Auto Zone in Manchester and a fabulous group of car washing volunteers, Eat has \$400 to deposit in the EAT Scholarship Fund Account! Let's give 3 cheers for the National Charity League mom/daughter teams: Wendy & Emma Hotard, Rosa & Raquel Suarez Solar, Marian & Jennifer Dynis, and Cynthia & Eleni Orf, as well as friends: Doug Ford, Mike Sapp, Carolyn & Ron Thompson, Annette & David Calhoun, Jennifer Mahaffey & Sandy Walker and our own EAT family members, Terri Richards, Bobby & Ally Lowe, Jane and Shawn Chickey, The Palmer Family, Lynn Schmidt, Sharylee & Matthew Barnes



Volunteer Spotlight ... Jackie Cook



Jackie started volunteering with Equine-Assisted Therapy as a way to get out of the house and put her spare time to use. Volunteering outdoors with children and horses sounded like a good combination.

The students made an impression on Jackie and she became a reliable part of the Calvey Creek team of volunteers on Wednesday and Saturdays.

Jackie has an easy going personality that allows even the most shy child to feel comfortable. Magic is her favorite horse and watching the children progress over the past year has been her biggest reward.

When not volunteering with EAT Jackie enjoys spending time with her Husband , Grandchildren & two Jack Russell Terriers.

"I look forward to seeing the kids, they really make you smile." said Jackie

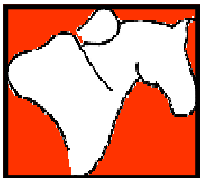


Instructor Spotlight ... Fran Natoli



My first exposure to therapeutic riding was through a family member involved with a program in Colorado. This sparked my curiosity and led me to look for a program locally. Volunteering for E.A.T. was originally a way to stay connected with my life long love of horses. As an instructor, I have been blessed to share many special moments with students and to see the benefits of therapeutic riding first hand. I look forward to growing along with the students and the E.A.T. program. What a gift to be purposeful and receive so much back in return.





Equine-Assisted Therapy News



Ω Saddle-Up with Magic Ω



Magic is a Quarter Horse gelding, who was donated to the Equine-Assisted Therapy by our dear friends of the EAT family, Bob & Mary Griner. Magic was born in 1987 and is easily identified in the field by his large white face, and a number "32" brand on his shoulder.



Quotable:

The people that make a difference in your life are not the ones with most credentials, the most money or the most awards. They are the ones that care" ~ Author Unknown



Onyx is the local barn cat up at our Town & Country location, Long View Farm Park. Onyx loves to follow the kids around out in the field while they have their lessons, and the riders just love her.

NARHA - What's a NARHA ? ? ? ?

NARHA - North American Riding for the Handicap Association

Appreciating the power of the horse to change lives



Year Founded: 1969

Mission Statement: NARHA changes and enriches lives by promoting excellence in equine assisted activities.

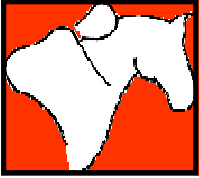
NARHA Vision Statement: NARHA is a global authority, resource and advocate for equine assisted activities which inspire and enrich the human spirit.

About NARHA: NARHA was formed in 1969 to promote equine assisted activities and therapies for individuals with special needs. With over 700 member centers, a total of more than 40,300 children and adults find a sense of independence through involvement with horses.



These member centers range from small, one-person programs to large operations with several instructors and therapists. In addition to horseback riding, a center may offer any number of equine assisted activities such as driving, vaulting, trail riding, competition, ground work, or stable management. Through a wide variety of educational resources, the association helps individuals start and maintain successful programs. There are more than 30,911 volunteers, 3,516 instructors, 6,305 equines, and thousands of contributors from all over the world making a difference in people's lives at NARHA centers.





Equine-Assisted Therapy News

Notice to EAT Family . . .

A meeting of EAT members will be held in the barn at Town & Country Longview Farm Park, at 11:30am October 10th, 2009.

October 10—Meeting Agenda

- Ω Call to Order
- Ω Election of Directors - Gary Hartke, Kristin Downey, Dick Taylor
- Ω Amendment of By-Laws
- Ω Annual Report
- Ω Adjourn

If you cannot attend, please advise by emailing Ginni at ginni.hartke@equine-assistedtherapy.org

Respectfully submitted,

Steven H. Akre
Corporate Secretary

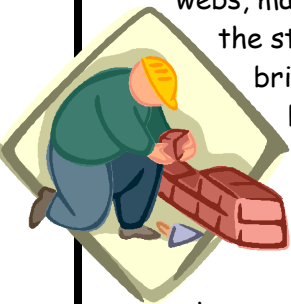


♥♥ Thank You's . . . ♥♥

In memory of our precious volunteer Peggy Webber:

Mr & Mrs Eugene Buckley
Ann Buckley

Danielle Brantley and folks from Brand Asset Management Group (AMG) including Todd Brand, Phil Daniels, Jason Akridge, Brad Davis, Cindy Dolniak & Ryan Green, spent all day Friday September 25th creating a new activity stall, knocking down cobwebs, making a gravel path from the barn to the stalls and pasting down the loose bricks in our walkway. Then, on September 27th, the whole Brantley family, Mitch Ennenbach and Gary Hartke stocked the new shelves and cleaned out unnecessary clutter from storage stalls and the rafters....oh! and fixed the arena fence that Tomeo is insistent on relocating! :-)



♥♥ Thank You's . . . ♥♥



- Ω Antoinette & William Calhoun
- Ω AT&T Employee Giving
- Ω Bill Schmidt for shoeing our Calvey Creek horses
- Ω Bob Theis for shoeing our T & C horses
- Ω CVPT— Olivette - St. Louis Physical Therapy
- Ω Dawn Holland - donated a case of horse treats for our horses from Purina.
- Ω Don & Sally Morton
- Ω Homestead Veterinary Clinic for caring for the health of our T & C horses
- Ω Keith Pey - Wachovia Securities volunteer contribution program
- Ω Peggy Brown for Bubby's Fluid Flex
- Ω Randy & Tamara Nelson
- Ω Reach Out America
- Ω Ron & Carolyn Thompson
- Ω St. Louis Equine Veterinary Services for caring for the horses at Calvey Creek
- Ω The Boeing Co

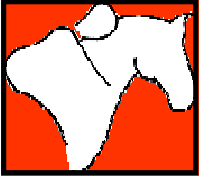
First Community Credit Union hosted a Casual Day in their 24 FCCU locations bringing in over \$1200 for Equine-Assisted Therapy.



Ω The EAT Mis-

Equine-Assisted Therapy, Inc has but one purpose; that is to provide horsemanship experiences to persons with mental, physical, and psychological disabilities in order to enhance the quality and productivity of their lives.





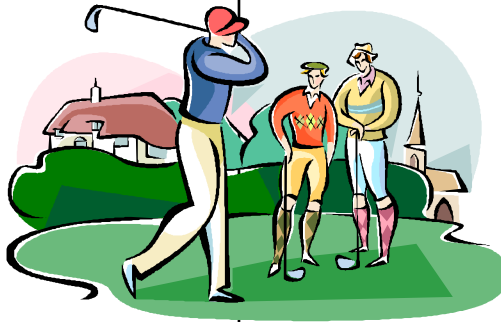
Equine-Assisted Therapy News

EAT's 5th Annual Golf Tournament



This year Equine-Assisted Therapy's 5th Annual Golf Tournament was a success despite the horrid economy. Nothing like years past but we are so grateful that so many wonderful people wanted to see this event happen and were willing to move mountains toward that end! Note the huge list below! Every one of these names holds a special place in our hearts !

- Ω **Mike and Melody Roberts for hosting this very popular event every year!!!**
- Ω **Danielle Brantley & Gene Basler for chairing this in-the-midst-of-a-recession event!!!**
- Ω Becky & John Lydon
- Ω Ben Franklin
- Ω Berg-Salus w/ Wachovia
- Ω Brandon Roberts
- Ω Ceres Consulting
- Ω Commercial Development
- Ω Doug Lowery @ Golf Discount in Chesterfield
- Ω Drury Marketing
- Ω Duffys Grill & Bar
- Ω Edible Arrangements
- Ω Environmental Ops
- Ω Face & Body Spa
- Ω Frederick & Janet Horner
- Ω Gene & Nancy Basler
- Ω Gerry Schallom
- Ω Gus' Pretzels
- Ω Healthcare Complete, LLC
- Ω Helmkampf Construction
- Ω Dr Holly Ellis donated the teeth whitening kit
- Ω Homestead Veterinary Clinic
- Ω Ideal Landscaping Group



- Ω Jerry Pilcher
- Ω Jessica at CFGC
- Ω Judy Pilcher at the Face & Body
- Ω Kaness Steakhouse
- Ω Kevin O'Toole - Commerce Bank
- Ω Lopata, Flegel & Company
- Ω Louise Stevenson
- Ω Lucy Mitchell & Walters Golf Management Group
- Ω Maggie O'Briens Catering
- Ω Matthew Powell at PF Changs in Chesterfield
- Ω Meramec Lakes Golf Course
- Ω Michael Wheatley with BFit2 Personal Training
- Ω Paul Dischers original Equine Art
- Ω Port Salon in Fenton

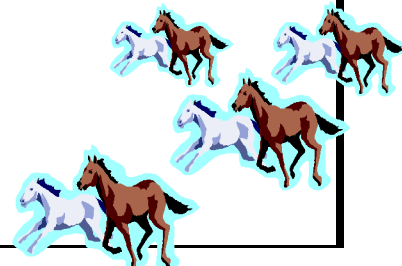


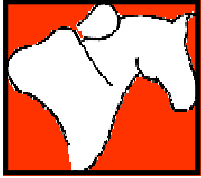
- Ω Repertory Theater of St Louis
- Ω Scott Holland - was instrumental in providing a lot of beverages donated for the tournament
- Ω Six Flags
- Ω Spencer Dean
- Ω Spirtas
- Ω St Louis Billkens Womans Basketball
- Ω St Louis Symphony Orchestra

- Ω Steve Akre
- Ω The Schmidt Family
- Ω the Staff at CFGC
- Ω The Wallis Company
- Ω Tom Schaller - Laclede Gas
- Ω Tower-Tee

Equine-Assisted Therapy Staff

- Ω Caryn Mundell
- Ω Fran & Mike Natoli
- Ω Jeannie Carr
- Ω Julie & Taylor Branson
- Ω Karen Ernst
- Ω Karen Huff
- Ω Kelly Baker
- Ω Kristin & Joe Downey
- Ω Linda & Dick Taylor
- Ω Melissa Curfman Falvey





Equine-Assisted Therapy News

Equine Assisted Therapy - Contact Info

Participant-Volunteer Coordinator

Terri Richards

Phone: (314) 971-0605

e-mail: garichars@gmail.com

President

Ginni Hartke, RN

Phone: (314) 221-3642

ginni.hartke@equine-assistedtherapy.org

Director - Town & Country

Danielle Brantley

Phone: (314) 607-7061

EATherapy@gmail.com

Equine-Assisted Therapy - Program Addresses

Equine-Assisted Therapy, Inc.

5591 Calvey Creek Rd,

Robertsville, MO 63072

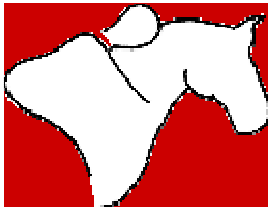
EAT-Longview Farm Park

Clayton & Mason Rd

Town & Country, MO 63141

Newsletter Editor : Keith Pey

visit our web-site: www.equine-assistedtherapy.org



Equine-Assisted Therapy, Inc

5591 Calvey Creek Rd,

Robertsville, MO 63072

ADDRESS SERVICE REQUESTED 1

The EAT Board of Directors ...

- Ω Gary Hartke - Executive Director
- Ω Steve Akre - Secretary/Treasurer
- Ω Steve Gable - Board Member
- Ω Dick Taylor - Board Member
- Ω Kristin Downey - Board Member