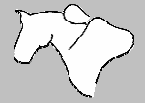
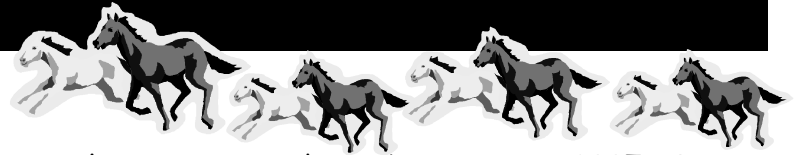




Equine-Assisted Therapy News



From The Director's Desk...



A HOME OF OUR OWN



Equine-Assisted Therapy has gotten off to another exciting and very busy start in 2007. Our lessons have begun for our rising number of Participants, now at 124; the planning of our annual egg hunt; a visit from Channel 11 news; the preparation for the opening of our Town and Country location and the usual hub-bub of getting a new season up and running,

In amongst all of this activity, EAT is looking for a home of our own. We have looked at so many possibilities,,,, enough to make one's head spin! We've explored everything from leasing to renting to the buying of property. This has required the writing of grants, donation request proposals and creative financing... we've spent countless hours looking at every aspect.

Gary has written 5 grant requests for funding with help from Mike Tschlis, Steve Akre and Mike Roberts, while I've sent off proposals for the building of an arena by Extreme Makeovers; fencing from ElectroBraid Fencing with assistance from Linda Taylor and De Brantley.

We'd love to relocate in Eureka so Kristin Downey, Carol Ailor and Melissa Curfmann-Falvey are having petitions signed by Eureka residents who would support Equine-Assisted Therapy in their community. Board member, Sharon Hunt, and so many others, have found numerous leads to land or leasable facilities. Another Board member, Steve Akre, has done all of our legal/contractual work at no charge. Mike Roberts is currently looking into a piece of property for us that would be FABULOUS

so we're keeping our fingers crossed on that one! So many hearts and souls working with one mind.... a safe and peaceful haven for 124 participants, 11 therapy horses AND all of our wonderful volunteers of course!

This is an exciting time for our Equine-Assisted Therapy Program ! Please keep our efforts in your thoughts and prayers!

♥ Ginni





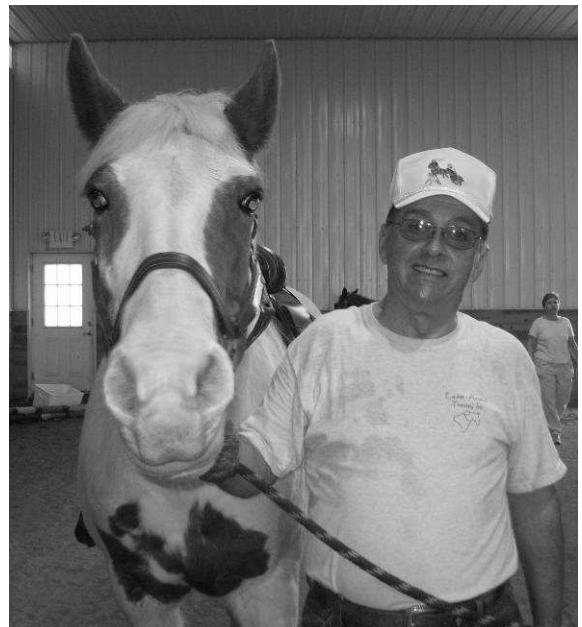
Equine-Assisted Therapy News



☪ Volunteer Spotlight on "Bob Griner"

Meet Bob Griner, our "Groom Extraordinaire"! Bob and his wife, Mary, are proud owners of three Paso Finos. They donated their Quarter Horse, Magic, to the Equine-Assisted Therapy program two years ago. Magic has been a dependable and trusted member of our EAT family.

Bob is a member of The St Louis Trailwatchers and enjoys steer roping and photography as hobbies. Bob is in high demand among the EAT instructors and he graciously comes out not once a week, but TWICE! Bob's horse knowledge and obvious love for our mission make him absolutely indispensable.

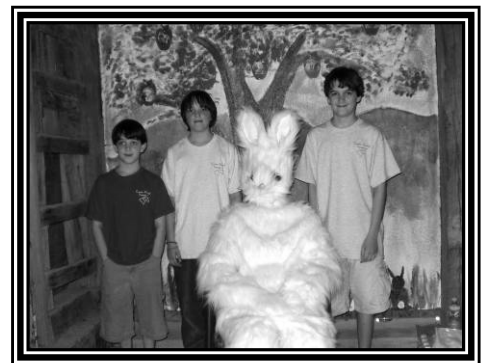


2ND ANNUAL EAT EASTER EGG HUNT - MARCH 31ST 2006

Despite the threatening weather which was ever present we had a wonderful day at the 2nd Annual EAT Egg Hunt held at our Town & Country location at Longview Park. Thanks to all involved for the huge show of support and dedication to our program that is proving, day after day, to mean so much to so many! One parent thanked us for allowing an event like this to bring her whole family together.... not only dad and siblings came out for the egg hunt, but grandma and grandpa too. ☺ Many who were in attendance made a special effort to say "thanks", "it was great fun", & "please have it again next year!"

One of the highlights of the day was the visit from our surprise guest, the Easter Bunny. The Bunny was available for pictures and visited with our many guests, it truly helped to make this a Special Day!

We hid 3360 eggs throughout the park and the many "hunters" made quick work of returning them back to the T & C barn where the kids were able to trade in the eggs for coupons which they could use at the "EAT Country Store". Based on the amount of their coupons they could choose from a wide selection of toys and stuffed animals. The day also included a raffle and refreshments were available in the T & C barn.





Equine-Assisted Therapy News

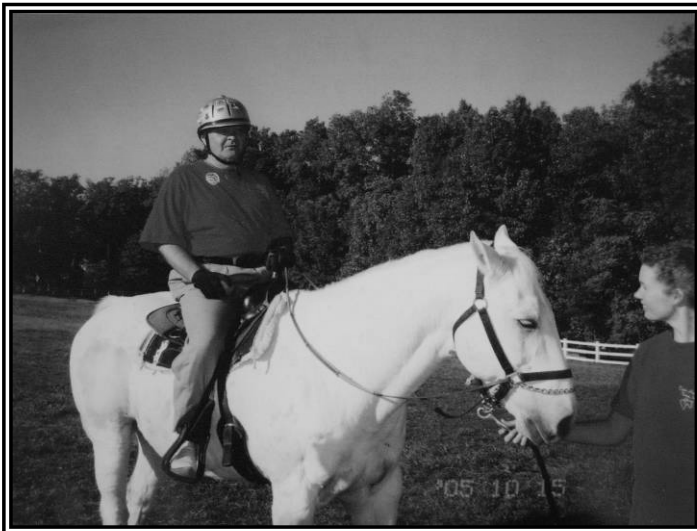


Participant Spotlight ...

Ω " Claude Turner " Ω

Spotlight on "Claude"

Claude Turner is a 59 year old Cowboy Wanna-bel and he's doing a very good job at it! Claude rides Smokey with finesse and style cutting quite a picture, as you can see! Claude's marvelous humor and never-ending smile, not to mention his great zeal for riding, are an encouragement to everyone who knows him!



Ω EAT Testimonials . . . Ω

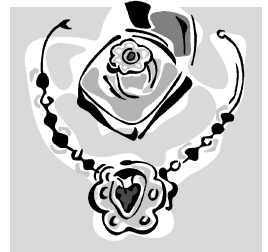
"Rebekah, 24 years old, has developed an amazing sense of self-worth and self confidence since participating in therapeutic horseback activities for the past 9 years. Her verbal communication, coordination, and muscle tone have improved so much that it is hard to believe she is the same young girl who couldn't complete a sentence or walk unassisted up/down steps when she was 9 years old."

"Even as our program has grown from 3 participants to 120 in three years we are always excited to help another child into the saddle of their very first horse. Their initial reactions range from slight fear to total amazement, but always end in absolute joy!"

SILPADA Jewelry Party ...

...You're invited !!

Julie Branson, mother of Taylor, one of our participants is hosting a Silpada Jewelry party June 10th from 2:00 pm to 5:00 pm at the Town & Country Barn. All proceeds from this event will be donated to the Equine-Assisted Therapy Program. This event is open to the public and all are welcome. It will be a casual walk-through setting with food and drink available. You can show your support for the EAT program by participating in this event and spreading the word to your friends & neighbors.



Equine-Assisted Therapy
Longview Farm Park
13525 Clayton Road
Town & Country, MO 63141

All proceeds to benefit Equine-Assisted Therapy
Contact Julie Branson @ 636-938-1408

Check the jewelry line out at: www.silpada.com

Saddle-Up with an EAT Horse

Ω Meet "Foxy" Ω

Foxy is our most beloved pony at Equine-Assisted Therapy! So many of our riders got their very first horseback riding

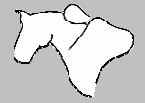


experience on Foxy and they always hated giving her up for a bigger horse as they themselves grew. Owned by Brittany Roberts, Foxy has made a priceless impact on a number of children as she gently and consistently helps them with each and every challenge in their weekly lessons.





Equine-Assisted Therapy News



Ω Upcoming E.A.T Events Ω

MARK YOUR CALENDARS FOR THESE UPCOMING
2007 EQUINE-ASSISTED THERAPY EVENTS



MAY 19TH, 2007

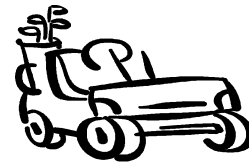
Ω 2ND ANNUAL WALK-A-THON
WALK STARTS AT 10 A.M. IN THE
IN THE LONGVIEW FARM PARK PAVILION

MEET IN THE MASON RIDGE ELEMENTARY SCHOOL PARKING LOT AT 10 A.M.,
ENJOY A BEAUTIFUL WALK THROUGH LONGVIEW FARM PARK,
REFRESHMENTS SERVED. PLEDGE SHEETS AND/OR BROCHURES
AVAILABLE AT EITHER LOCATION.



SEPTEMBER 2007

Ω 3RD ANNUAL GOLF CLASSIC
THIS YEAR TO BE HELD AT THE NEW
CRESCENT FARMS GOLF CLUB



OCTOBER 27TH

Ω 3RD ANNUAL FALL FESTIVAL COMMUNITY DAYS Ω
11 A.M. - 2 P.M.
PONY RIDES, FOOD, GAMES & FUN!



THERE ARE MANY DIFFERENT WAYS YOU TOO CAN BE INVOLVED WITH THIS GREAT PROGRAM!

- Ω PARTICIPATE IN ONE OF OUR FUND RAISERS
- Ω YOU CAN ADOPT A THERAPY HORSE FOR \$100 A MONTH TO HELP WITH HIS EXPENSES AND HAVE YOUR NAME DISPLAYED ON OUR STALL PLAQUES DURING THAT MONTH
- Ω BE A BARN BUDDY & HELP WITH CLEANING STALLS, MAINTAINING THE GROUNDS, CARING FOR THE HORSES & MAKING MISC REPAIRS.
- Ω YOU CAN BE A "GIVING TREE" DONOR FOR \$2500 OR MORE AND HAVE YOUR NAME PERMANENTLY ENGRAVED ON OUR "GIVING TREE" WHICH IS DISPLAYED IN THE GUEST ROOM OF OUR TOWN AND COUNTRY BARN.
- Ω SPONSER ONE OF OUR EQUINE-ASSISTED THERAPY PARTICIPANTS. ☺
- Ω RAISE MONEY FOR EQUINE-ASSISTED THERAPY BY SEARCHING THE INTERNET WITH GOODSEARCH - VISIT WWW.GOODSEARCH.COM



Equine-Assisted Therapy News



♥♥ Thank You's... ♥♥

There are so many people to thank that it is difficult to know where to begin. . . . We work hard to ensure we recognize everyone who contributes to EAT. Please forgive us if we have overlooked anyone . . . ☺

- ☺ **Brendan Andre** - toys for activities and prizes
- ☺ **Brittany & Brandon Roberts** – prizes for games
- ☺ **Lynn Schmidt** - for heading up our May 19th walk-a-thon
- ☺ **Danielle Brantley** - for being our surprise guest at our 2nd annual easter egg hunt
- ☺ **Jim Lange** - with Make-A-Wish Foundation
- ☺ **Jeff Bernthal & cameraman, Jason**, from Channel 11- for a wonderful story covering Grahams maiden voyage in his new Make-A-Wish saddle
- ☺ **Scott Drewes** – for redoing our Giving Tree
- ☺ **Randy & Tamara Nelson**
- ☺ **The Tschlis Family**
- ☺ **St Louis Christmas Carols Association**
- ☺ **Sacred Heart of Eureka**
- ☺ **Randy and Tamara Nelson**
- ☺ **Julie Thomas**
- ☺ **Artie Thom**
- ☺ **April & Heather at Starbucks** for their donation of fabulous gifts in preparation for our observance of National Volunteer Appreciation Week in April
- ☺ **NCL - National Charity League** - for all they did to make our EAT Egg Hunt a great success.
- ☺ **Everyone** who came out - despite the threat or horrid weather - to make our EAT Egg Hunt a huge success

☺ In Memory Of Sammy ☺

♥ *Our hearts go out to the Goldman Family in the loss of little Sammy.*

Our prayer is that he has gone on to a place where there is no disease, no suffering, and all little boys can run and play.

☺ Contributions . . . ☺

♥ Barn Buddies - (donations of \$1 - \$100)

- ☺ Halley Family
- ☺ Kathleen Milton – through the AT&T United Way
- ☺ Sandra Eberle - through the Safeco Insurance Employee Giving Program
- ☺ Guy and "Mar" Schmitz

♥ Trail Riders – (donations of \$100 - \$250)

- ☺ Carol Collins – through the AT&T United Way
- ☺ Mitch Ennenbach
- ☺ Karen Ernst – through the AT&T United Way
- ☺ Phyllis Leventhal
- ☺ Sally & Don Morton
- ☺ Keith & Sheila Pey and Family

♥ Participant Sponsors – (donations over \$250)

- ☺

☺ Goodsearch for EAT ☺



Now there's a new way you can help our Equine-Assisted Therapy program just by the searches you make on the internet with the GoodSearch search engine powered by Yahoo! When you designate EAT as your selected charity, EAT will receive one cent for every search you make. We've earned almost \$30 since February!!

Check out the Goodsearch search engine at www.GoodSearch.com

Quotable . . .

Horses and children, I often think,
Have a lot of the good sense there is in the world.
~ Josephine Demott Robinson



Equine-Assisted Therapy News



Equine Assisted Therapy - Contact Info

Participant-Volunteer Coordinator

Terri Richards

Phone: (314) 487-5419

e-mail: garichars@gmail.com

Director - Crescent Farms

Ginni Hartke, RN

Phone: (314) 221-3642

e-mail: ginnih@gtw.net

Director - Town & Country

Kristin Downey

Phone: (314) 707-6773

e-mail: kdmonaco@hotmail.com

Equine-Assisted Therapy - Program Addresses

Equine-Assisted Therapy, Inc.

644 Old Smizer Mill Road

Fenton, MO 63025

Crescent Farms

700 Lewis Road

St. Louis, MO 63025

Longview Farm Park

Clayton & Mason Rd

Town & Country, MO 63141

visit our web-site: www.equine-assistedtherapy.org

Newsletter Editor : Keith Pey e-mail: EAT.editor@gmail.com



Equine-Assisted Therapy, Inc

644 Old Smizer Mill Road

Fenton, MO 63026